

**ICG** **INDOFINE Chemical Company, Inc.**

121 Stryker Lane, Bldg. 30, Suite 1 • Hillsborough, NJ 08844 • U.S.A.

Phone: (908) 359-6778 • FAX: (908) 359-1179

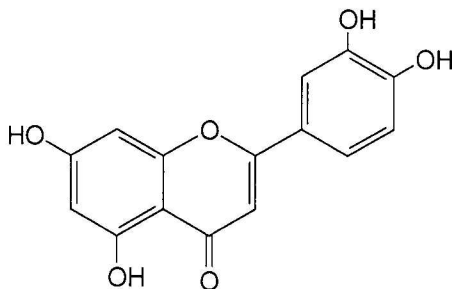
website: [www.indofinechemical.com](http://www.indofinechemical.com)

e-mail: [chemical@indofinechemical.com](mailto:chemical@indofinechemical.com)

**CERTIFICATE OF ANALYSIS**

Cat No.: L-101

<u>Product:</u>	<b>LUTEOLIN</b> (5,7,3',4'-Tetrahydroxyflavone)
<u>CAS No.:</u>	[491-70-3]
<u>Lot Number:</u>	0701015
<u>Molecular Formula:</u>	C <sub>15</sub> H <sub>10</sub> O <sub>6</sub>
<u>Molecular Weight:</u>	286.24
<u>Melting Point:</u>	328-330°C
<u>Appearance:</u>	Yellow powder
<u>Moisture:</u>	5.9%
<u>Solubility:</u>	Soluble in Water & Alcohol
<u>Purity (HPLC):</u>	98.36%





# INDOFINE Chemical Company, Inc.

121 Stryker Lane, Bldg. 30, Suite 1 • Hillsborough, NJ 08844 • U.S.A.

Phone: (908) 359-6778 • FAX: (908) 359-1179

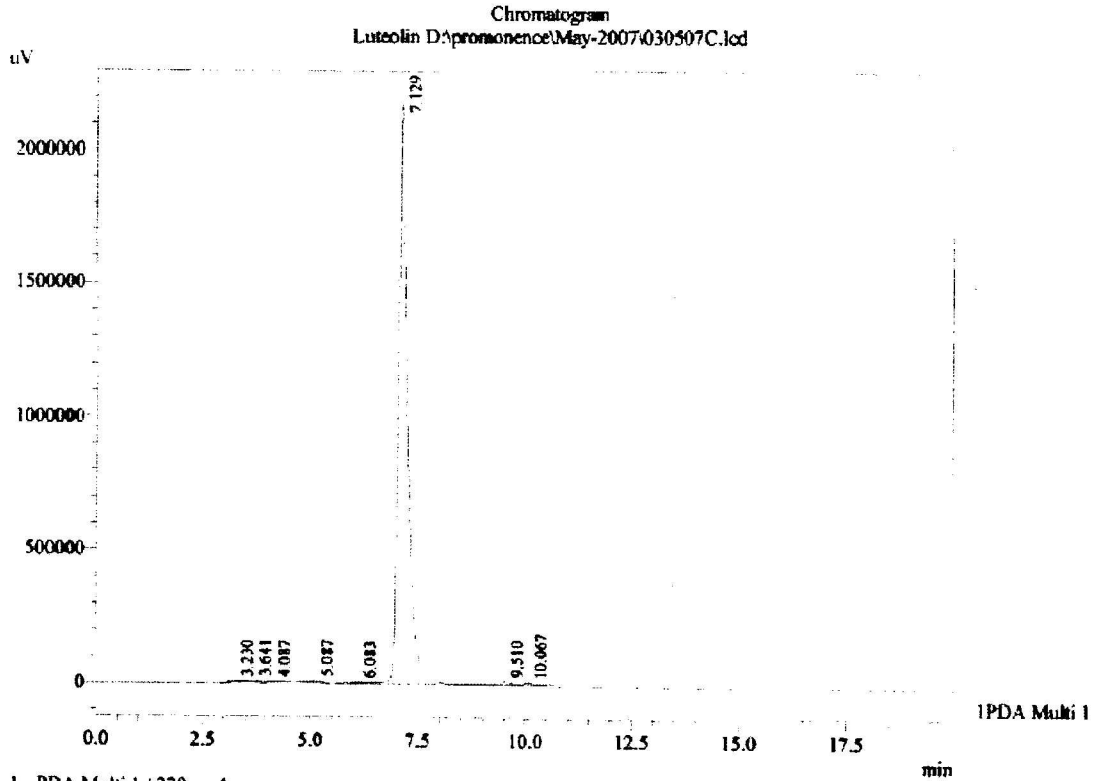
website: [www.indofinechemical.com](http://www.indofinechemical.com)

e-mail: [chemical@indofinechemical.com](mailto:chemical@indofinechemical.com)

Catalog No.: L-101  
Lot No.: 0701015

Acquired by : Ramana  
Sample Name : Luteolin  
Sample ID : 5,7,3',4'-Tetrahydroxy Flavone  
Injection Volume : 20 uL  
Data Filename : 030507C.lcd  
Method Filename : Linear Isocratic.M.lcm

Description:  
Column : Inertsil C-18, 250X4.6mm 5.0µm  
Flow : 0.600ml/min.  
Mobile Phase : B(50% Water 0.05% TFA) : A(50% ACN)



1 PDA Multi 1 / 230nm 4nm

PeakTable

PDA Ch1 230nm 4nm

Peak#	Ret. Time	Area	Height	Area %
1	3.230	53416	2203	0.162
2	3.641	62283	3372	0.189
3	4.087	11391	946	0.035
4	5.087	58663	4858	0.178
5	6.083	10011	368	0.030
6	7.129	32379141	2170089	98.363
7	9.510	215821	12000	0.656
8	10.067	127297	6491	0.387
Total		32918023	2200328	100.000